

# INSTRUCTION MANUAL

---

## 240V AUTO MINI-BOWSER PUMP ASSEMBLY

---

L-HMBA240V



# 240V AUTO MINI BOWSER PUMP ASSEMBLY

L-HMBA240V

## DESCRIPTION

This diesel transfer pump kit has been designed for the delivery of diesel & kerosene from an open surface tank. The kit has a built in on/off switch located at the bottom of the automatic nozzle holder.

The kit contains, pump, flow meter, suction hose with strainer, 4m delivery hose and automatic nozzle.

## TECHNICAL INFORMATION

**Voltage - 240V AC**  
**Frequency - 50/60HZ**  
**Power (nominal) - 450 watt**  
**Flow rate - 80LPM (free flow)**  
**Temperature - -20°C / +40°C**

This manual contains all the relevant information on the operation and maintenance of this kit.



### IMPORTANT

**THIS PUMP KIT SHOULD BE USED WITH DIESEL AND KEROSENE ONLY**

**THE PUMP MOTOR IS NOT AN ANTI-EXPLOSIVE TYPE.**

Do not install pump where flammable vapours are present.

**DO NOT use this pump with any type of gasoline, water, food liquids, chemicals or solvents**

### PRELIMINARY INSPECTION

1. Open box and examine all components for any signs of damage that may have occurred before delivery.

## INSTALLATION

1. Fit the bowser to a suitable secure surface capable of handling the weight of this pump unit.
2. For best results, the unit should be placed as near as possible to level of liquid to be pumped. (Max. distance 2m)
3. Screw the delivery hose on the fitting on the outlet of the flow meter
4. Attach the automatic nozzle to the remaining end of the delivery hose.
5. Attach the suction hose provided to the pump inlet. The suction hose must be sealed. If using a longer suction hose to a maximum of 4 meters a foot valve with filter should be used.

**Note:** The suction hose should be a diesel resistant rubber or plastic spiral shaped hose, with 25mm minimum I/D.



### IMPORTANT

For your safety, it is recommended that the electrical connection is fitted with a safety device of 30mA minimum Din standard.

**Note:** The plug or cable should only be replaced by a qualified electrician.

## INITIAL START UP

1. Check the hoses are sealed and fitted correctly.
2. Place the suction hose into the tank.
3. Place the automatic nozzle into the vessel to be filled.
4. Start the pump, gradually move the switch to "ON" to start the pump.
5. When finished, the nozzle should automatically shut off.
6. Switch the pump off.
7. Replace the nozzle into the nozzle holder.

### FLOW METER (not suitable for resale use)

1. The flow meter shows the litres pumped by the unit.
2. The mechanical meter has two totalisers, a resettable total and non resettable total.
3. To reset the batch total to zero, turn the knob on the left of the unit until all zeroes are displayed.

### Calibration

This meter used is factory calibrated. Calibration is recommended upon initial use, or after disassembly or significant wear

#### Meter calibration procedure

**Note:** Use an accurate measuring container of at least 50 litres.

1. Fill container to a know volume.
2. Compare the volume in the accurate container with the volume recorded on the meter and adjust the meter as required.
  - a) Turn the calibration screw clockwise to increase the volume.
  - b) Turn the calibration screw anti-clockwise to decrease the volume.



### WARNING

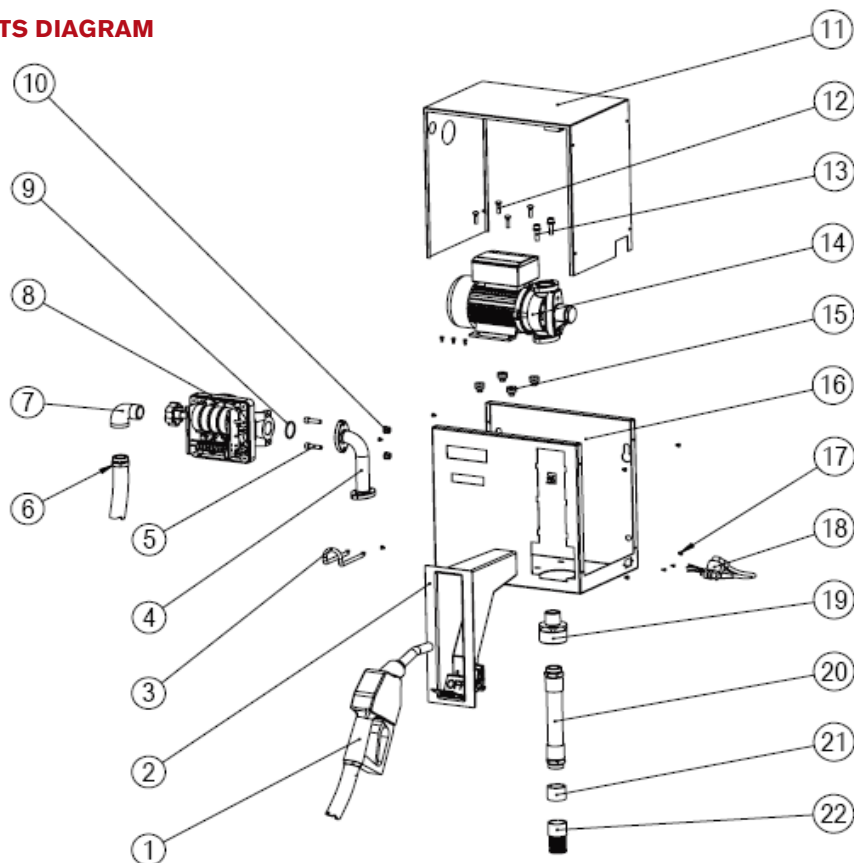
1. The nozzle lock is provided and designed to prevent any unauthorised use.
2. Do not start the pump before connecting the suction hose, delivery hose and nozzle
3. Once the automatic nozzle has shut off, return the nozzle to the nozzle holder and switch off the pump motor as soon as possible.
4. The pump must only run in by-pass mode for 3 minutes.
5. If there is a power blackout switch the pump off disconnect plug to avoid unexpected overflow if and when the pump starts.

**Do not** use the pump with wet hands, barefooted or close to any water.

## 240V AUTO MINI BOWSER PUMP ASSEMBLY

L-HMBA240V

### PARTS DIAGRAM



No	Description	Qty
1	Auto nozzle	1
2	Nozzle holder	1
3	Hose holder	1
4	Fitting	1
5	Bolt M8	2
6	Outlet	1
7	Elbow	1
8	Meter	1
9	O-ring	1
10	Nut M8	2
11	Cover	1

No	Description	Qty
12	Bolt M6	4
13	Bolt M8	2
14	Pump	1
15	Washer	4
16	Bottom plate	1
17	Bolt M4	8
18	Power cord	1
19	Fitting	1
20	Inlet	1
21	One way valve	1
22	Filter mesh	1

# 240V AUTO MINI BOWSER PUMP ASSEMBLY

L-HMBA240V

## TROUBLESHOOTING GUIDE

Problem	Cause	Solution
The pump does not work	Pump shaft jammed	<ul style="list-style-type: none"> <li>a) Disconnect and remove the power plug.</li> <li>b) Remove the cover from the unit.</li> <li>c) Remove the pump body</li> <li>d) Clean and contaminants and check for correct operation</li> <li>e) Re-assemble</li> </ul>
	No power	<ul style="list-style-type: none"> <li>a) Check the power to the plug</li> <li>b) Check plug is connected correctly and switched on.</li> <li>c) Check the motor for correct operation (replace pump if motor is faulty)</li> </ul>
The pump works but does not deliver fluid	Sucking air from suction tube	<ul style="list-style-type: none"> <li>a) Re-seal the suction tube connections.</li> <li>b) Check the suction tube is submersed into the fluid and free from blockages.</li> </ul>
	Air inside pump	<ul style="list-style-type: none"> <li>a) Check the pump strainer is clean and free from blockages.</li> <li>b) Ensure the suction hose is less than 2m or 4m if a foot valve is fitted.</li> </ul>